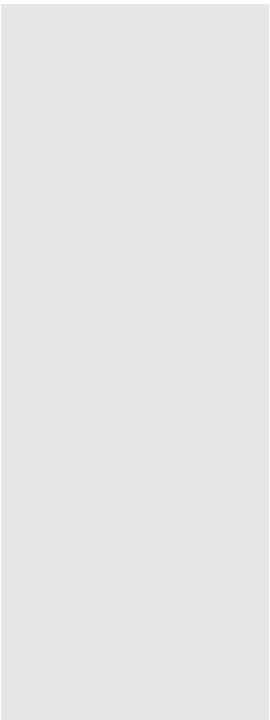




1. 200A ;  
Intermittent 200A load.

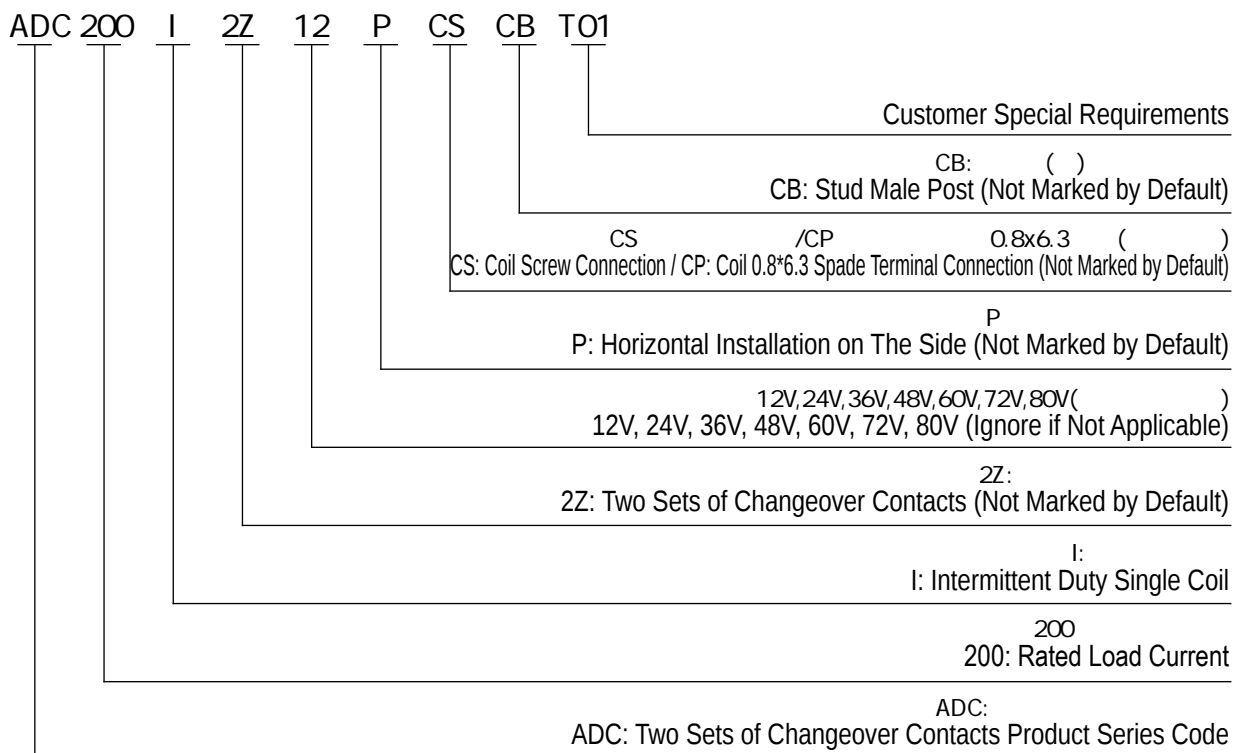
2. ;  
It has two sets of normally open and two sets of normally closed contacts.



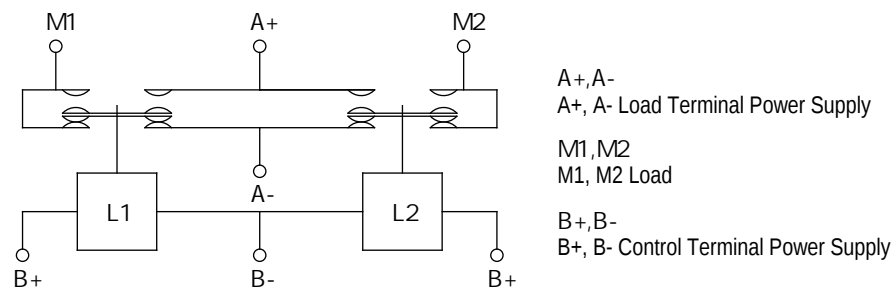
## ADC200I ADC200I Coil Parameters

Coil Voltage	Pickup Voltage	Dropout Voltage	Coil Resistance	Coil Power Consumption
12V	70% U <sub>s</sub>	5% -40% U <sub>s</sub>	6 ± 10%	24W± 10%
24V	70% U <sub>s</sub>	5% -40% U <sub>s</sub>	24 ± 10%	24W± 10%
36V	70% U <sub>s</sub>	5% -40% U <sub>s</sub>	54 ± 10%	24W± 10%
48V	70% U <sub>s</sub>	5% -40% U <sub>s</sub>	96 ± 10%	24W± 10%
60V	70% U <sub>s</sub>	5% -40% U <sub>s</sub>	150 ± 10%	24W± 10%
72V	70% U <sub>s</sub>	5% -40% U <sub>s</sub>	216 ± 10%	24W± 10%

### Model Coding



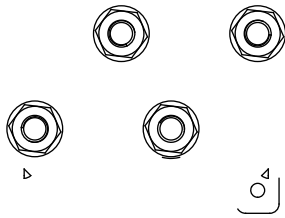
### Wiring Diagram



**ADC200I**  
ADC200I Wiring Diagram

# Outline Installation Dimension Drawing

ADC200ICS



4-M6  
Load Wiring 4-M6  
3.0-6.0N.m  
Torque 3.0-6.0N.m

3-M3  
Coil Wiring 3-M3  
0.5-0.8N.m  
Torque 0.5-0.8N.m

ADC200I

4-M6  
Load Wiring 4-M6  
3.0-6.0N.m  
Torque 3.0-6.0N.m

3-0.8x6.3  
Coil Wiring 3-0.8x6.3  
Spade Terminal

## Usage Cautions

1.

This document is only for customer selection reference, AOKAI has tried the best to ensure the accuracy of the information in this document. Product specifications and parameters may be changed due to product improvement etc., they may be inconsistent because of not updated in time. For the specific parameters and performance of each product, please refer to the samples provided by AOKAI and the corresponding signed and controlled specification.

2.

Regarding the application of this product, please select the matching product according to your specific use conditions and