



Features

1. 150A ;
Intermittent 150A load.
2. ;
It has one set of normally open contacts.
3. 22W;
4. 100M (1000VDC) 2kV;
5. IP :IP67;
IP protection level: IP67.
6. IEC 60664-1 GB/T14048.1 GB/T14048.4 ;
7. RoHS 2015/863/EU REACH 1907/2006/EC ;
8. CE RoHS

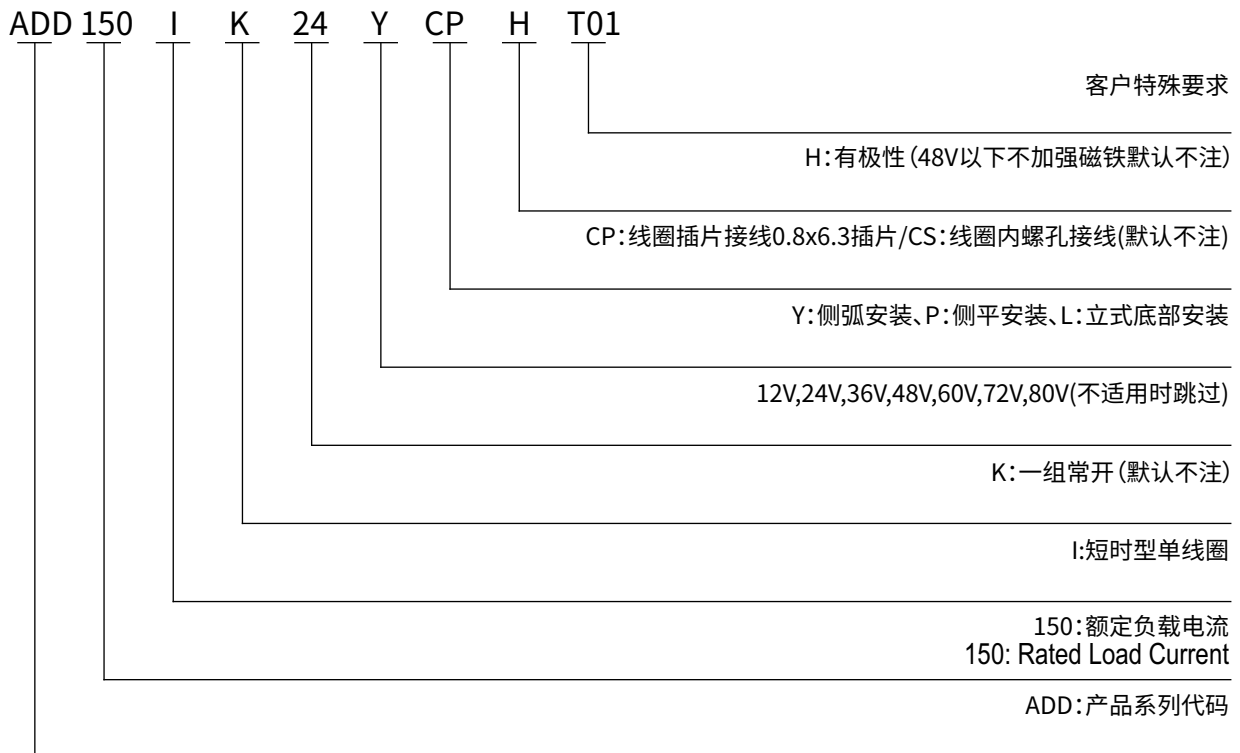
at23
Performance Parameters at23

| | | | |
|---------------------|--------------------------|-----------------------|--------------------------------|
| Contact Arrangement | 1K (1NO) | | 70% Us |
| Contact Resistance | 5m | | 5% -40% Us |
| | 80mV (at 80A) | | 5ms |
| Overload Current | 7Ie, 1s | Pickup Time | 20ms |
| Temperature | -40 ~-55 | | 10ms |
| Load Terminal | M6 M6 External Thread | | 50Hz/60Hz 1500VAC/1min |
| | 3.5g,10~200Hz,1/2 | | 50Hz/60Hz 1500VAC/1min |
| Relative Humidity | 5 ~95 RH | Insulation Resistance | Initial State 100M 1min |
| | 62.5x61x67.8mm | | After Electrical Life 50M 1min |
| | Intermittent | Shock | Stability 20g |
| () | 50000 (48V/150A) | | Strength 50g |
| | 6-8N.m | | 100000 |
| / | / | | 1.2-2.0N.m |

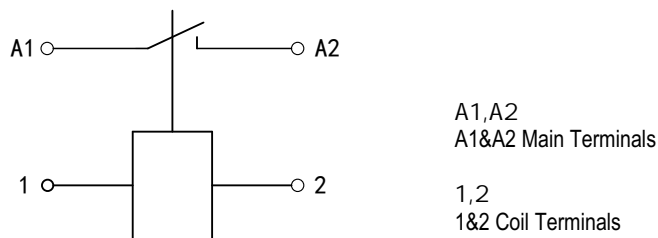
ADD150I ADD150I Coil Parameters

| | | | Coil Resistance | Coil Power Consumption |
|-----|--------------------|------------------------|-----------------|------------------------|
| 12V | 70% U _s | 5% -40% U _s | 7.3 ± 10% | 20W± 10% |
| 24V | 70% U _s | 5% -40% U _s | 26.8 ± 10% | 22W± 10% |
| 36V | 70% U _s | 5% -40% U _s | 65 ± 10% | 20W± 10% |
| 48V | 70% U _s | 5% -40% U _s | 134 ± 10% | 20W± 10% |
| 60V | 70% U _s | 5% -40% U _s | 190 ± 10% | 20W± 10% |
| 72V | 70% U _s | 5% -40% U _s | 272 ± 10% | 20W± 10% |

Model Coding



Wiring Diagram



ADD150I
ADD150I Wiring Diagram

Outline Installation Dimension Drawing

2-M6

6-8N.m

2-M4

1.2-2.0N.m

○ ○ ○ ○
○ ○ ○ ○

□

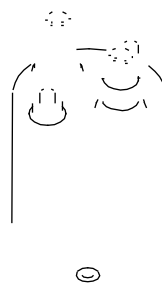
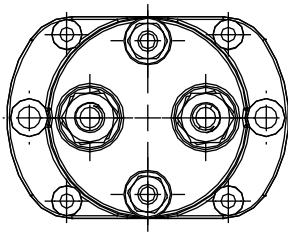
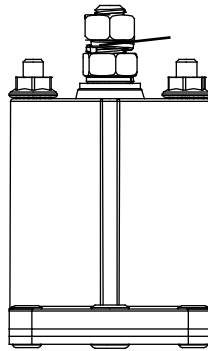
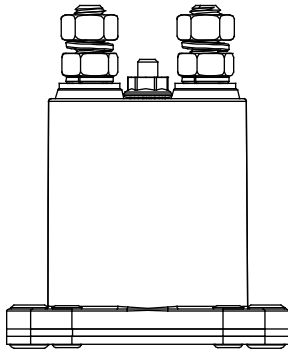
2-M6

6-8N.m

2-M4

1.2-2.0N.m

Outline Installation Dimension Drawing



2-M6

6-8N.m

2-M4

1.2-2.0N.m

2-M6

6-8N.m

T=0.8x6.3

Spade Terminal

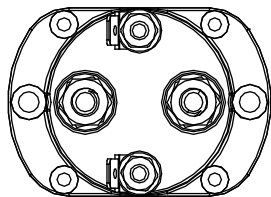
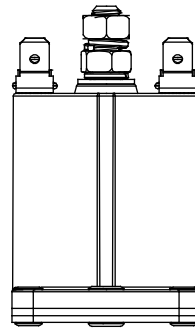
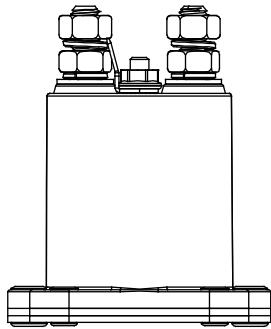
Outline Installation Dimension Drawing

2-M6

6-8N.m

T=0.8x6.3

Spade Terminal

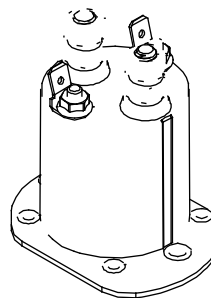


2-M6

6-8N.m

T=0.8x6.3

Spade Terminal



Usage Cautions

1.

the samples provided by AOKAI and the corresponding signed and controlled specification.

2.

to obtain more technical support.

3.

4.

5.

with thermal radiation. It is recommended to use it with a cooling fan.

6. 30cm

7.

8.

9.

10.

tion device.

11.

12.

It is strictly prohibited to wiring when power on.