

特性
Features

1. 150A ;
2. ;

性能参数 (at23°C)

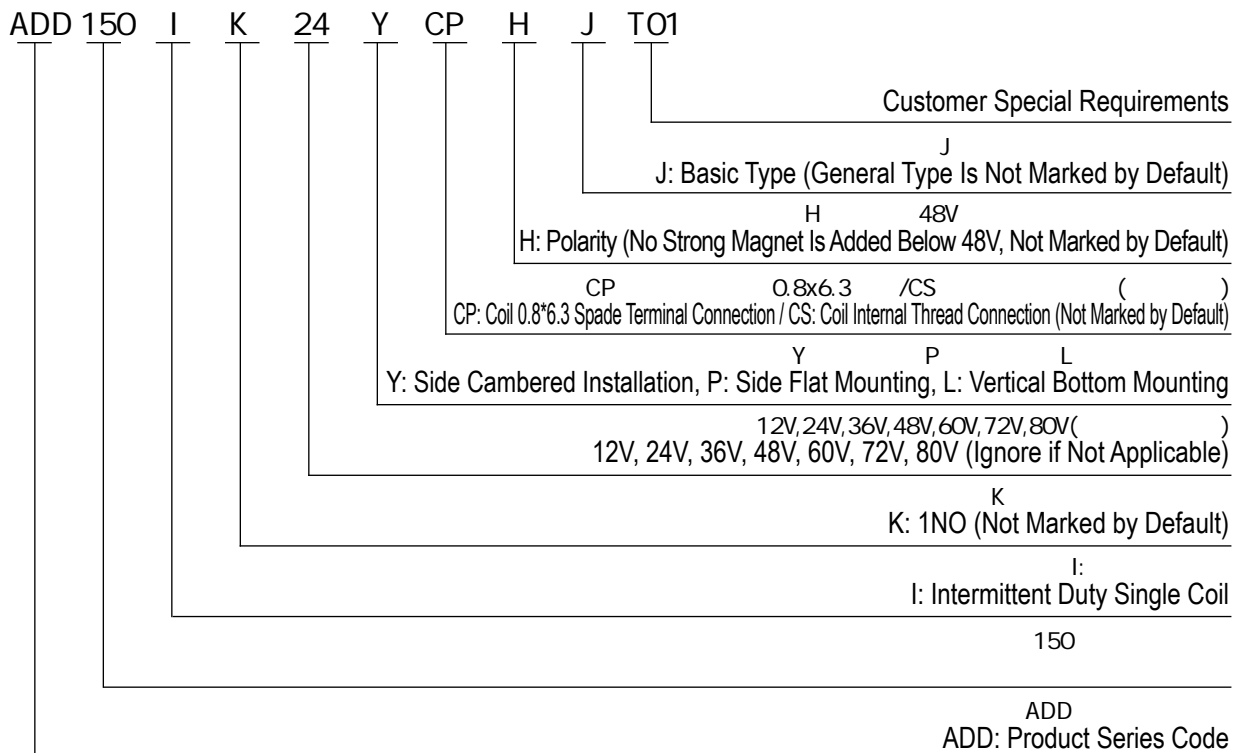
Performance Parameters (at23°C)

| | | |
|---|--------------------|-------------------------|
| | 1K (1@A) | |
| | 5_ | |
| | 80_ H (Sf 80A) | |
| | 7W 1e | 20_ e |
| | -40 p50 | 10_ e |
| | ? 6 | 50HI /60HI 1500HAC/1_ [|
| | 3.5Y,10p200HI ,1/2 | 50HI /60HI 1500HAC/1_ [|
| | 5 p95 DH | 100? 1_ [|
| | 62.5j 61j 67.8_ _ | 50? 1_ [|
| | | |
| | 50000 (48H/150A) | 50Y |
| | 6-8@_ | |
| / | / | |

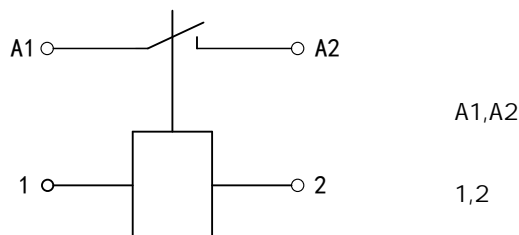
ADD150IJ线圈参数 ADD150IJ Coil Parameters

| Coil Voltage | Pull-In Voltage | Drop-Out Voltage | | |
|--------------|-----------------|------------------|-------------------|------------------|
| 12H | 70% Ge | 5% -40% Ge | 7.3 <i>f</i> 10% | 20I <i>f</i> 10% |
| 24H | 70% Ge | 5% -40% Ge | 26.8 <i>f</i> 10% | 22I <i>f</i> 10% |
| 36H | 70% Ge | 5% -40% Ge | 65 <i>f</i> 10% | 20I <i>f</i> 10% |
| 48H | 70% Ge | 5% -40% Ge | 134 <i>f</i> 10% | 20I <i>f</i> 10% |
| 60H | 70% Ge | 5% -40% Ge | 190 <i>f</i> 10% | 20I <i>f</i> 10% |
| 72H | 70% Ge | 5% -40% Ge | 272 <i>f</i> 10% | 20I <i>f</i> 10% |

型号说明 Model Coding



接线原理图 Wiring Diagram



ADD150IJ 接线图
ADD150IJ I [d Y D]SYd_

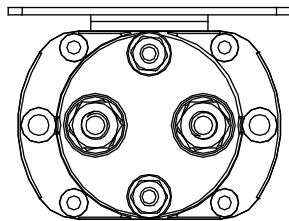
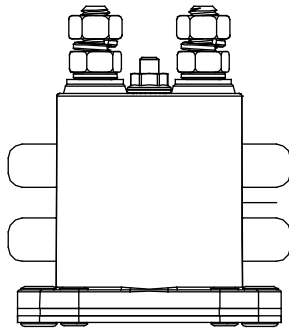
外形安装尺寸图
Outline Installation Dimension Drawing

ADD150IYJ≥,≥

2-? 6
Load Wiring 2-M6
6-8@_ _
Torque 6-8N.m

2-? 4
Load Wiring 2-M4
1.2-2.0@_ _
Torque 1.2-2.0N.m

ADD150IPJ

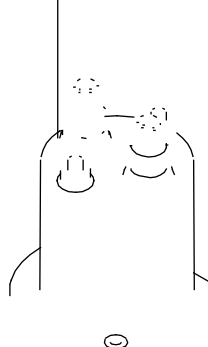
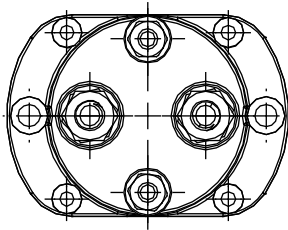
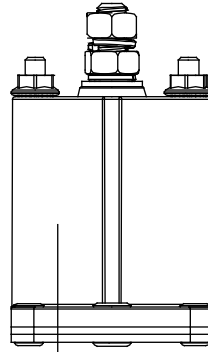
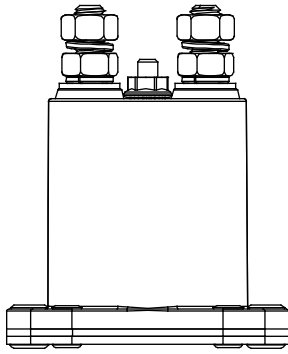


2-? 6
Load Wiring 2-M6
6-8@_ _
Torque 6-8N.m

2-? 4
Load Wiring 2-M4
1.2-2.0@_ _
Torque 1.2-2.0N.m

外形安装尺寸图
Outline Installation Dimension Drawing

ADD150ILJ



2-? 6
Load Wiring 2-M6
6-8@_ _
Torque 6-8N.m

2-? 4
Load Wiring 2-M4
1.2-2.0@_ _
Torque 1.2-2.0N.m

ADD150IYCPJ

2-? 6
Load Wiring 2-M6
6-8@_ _
Torque 6-8N.m

F=0.8j 6.3
Coil Wiring T=0.8*6.3

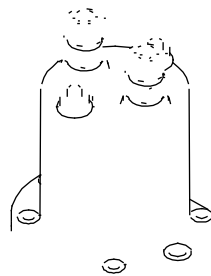
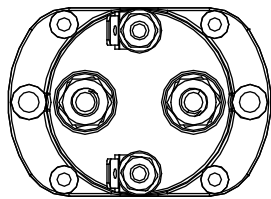
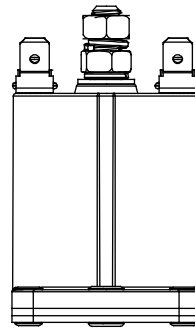
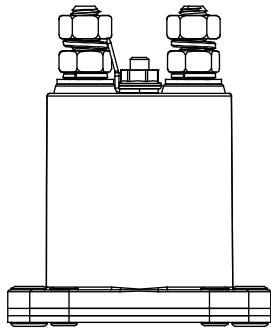
外形安装尺寸图
Outline Installation Dimension Drawing

ADD150IPCPJ

2-? 6
Load Wiring 2-M6
6-8@_ _
Torque 6-8N.m

F=0.8j 6.3
Coil Wiring T=0.8*6.3

ADD150ILCPJ



2-? 6
Load Wiring 2-M6
6-8@_ _
Torque 6-8N.m

F=0.8j 6.3
Coil Wiring T=0.8*6.3

使用注意事项 Usage Cautions

1.

This document is only for customer selection reference, AOKAI has tried the best to ensure the accuracy of the information in this document. Product specifications and parameters may be changed due to product improvement etc., they may be inconsistent because of not updated in time. For the specific parameters and performance of each product, please refer to

2.

Regarding the application of this product, please select the matching product according to your specific use conditions and environmental requirements when selecting the product. If the requirements are not clearly specified, please contact AOKAI

3.

When installing and using this product, regardless of wiring or fixed installation, it is required to use anti-loose spring washers.

4.

The torque for installing fasteners should be within the standard range required by this specification. It may cause the unstable installation or damaging the product if the torque is lower than the minimum torque or higher than the maximum torque.

5.

Do not install the contactor in places with strong magnetic fields (such as transformers or strong magnets), or close to objects

6.

30U_

It is forbidden to use the product that have been dropped from a high place (height \geq 30cm).

7.

It is forbidden to use the product in an environment with oil pollution, especially before wiring, it will seriously affect the main terminals conductivity if they are polluted by oil pollution, and affect the product life.

8.

It is forbidden to use the product beyond the rated electrical life. When the rated electrical life is reached, although the product can continue to work, there is a risk of failure, explosion, and burning because of non-breaking.

9.

This product cannot be used as a protector, and the circuit must be connected with a protector in series when using.

10.

AOKAI only does the resistive electrical life verification and quality assurance. When the product is used in an environment with inductive load or capacitive load, it is recommended that the circuit should be connected in parallel with a surge protec

11.

After continuous work, restarting immediately after disconnection will affect the pull-in voltage because the product is in a hot state, and the pull-in voltage will increase, which is a reasonable phenomenon.

12.